

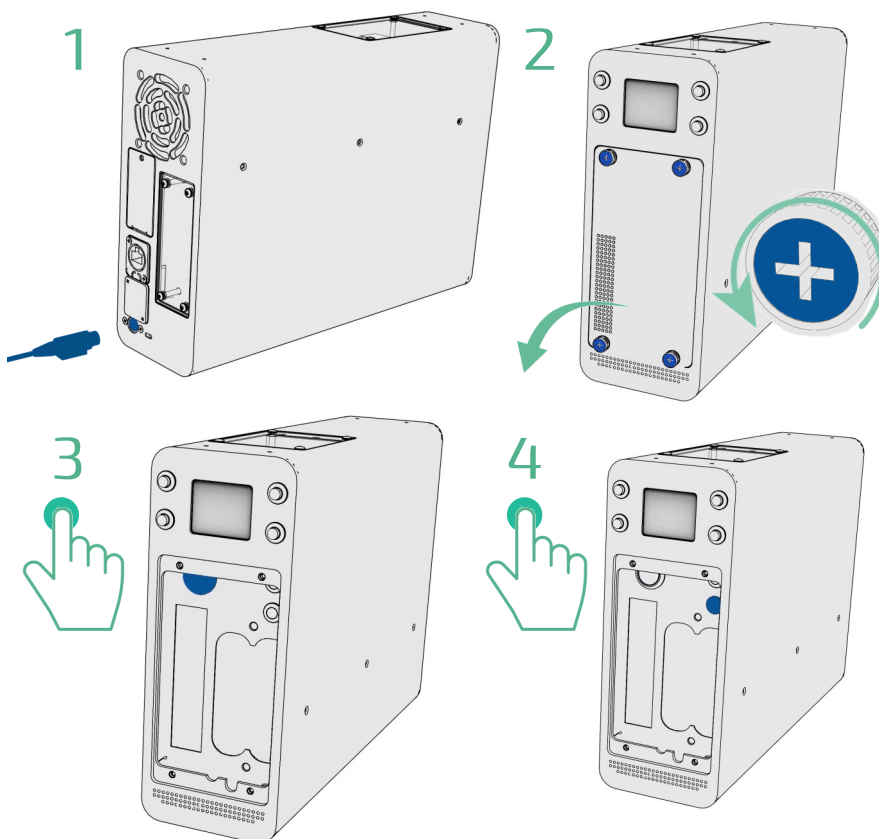
P100 Quick Start Guide



For your safety

Your new Kontron product was developed and tested carefully to provide all features necessary to ensure its compliance with electrical safety requirements. The product life expectancy can be effected by improper handling, installation and use.

For any questions or technical support please email Kontron UK; uksupport@kontron.com



To power on

- ① Plug in the supplied PSU
- ② Remove the front panel below the screen
- ③ Press the product power button
- ④ Press ATX power bottom button



Further documentation
can be found here

Instructions on usage

- › Do not use liquid or spray detergent to clean the product.
- › Keep equipment away from excessive humidity and heat.
- › When installing, place the equipment on a sturdy, level surface to prevent it from accidentally falling and causing damage to other equipment or injury to persons nearby.
- › Do not cover, block or in any way obstruct any of the ventilation holes. Proper air convection is necessary to keep it from overheating.
- › If you are using a power cord that didn't ship with the equipment, ensure that it is rated for the voltage and current labelled on the equipment's electrical ratings label. The voltage rating on the cord should be higher than the one listed on the equipment's ratings label.
- › Observe all precautions and warnings attached to the equipment.
- › Keep all liquids away from the equipment. Liquid spilled on to the product may cause damage, fire or electrical shock.
- › Only qualified personnel should install product. Improper installation and handling could invalidate warranty.

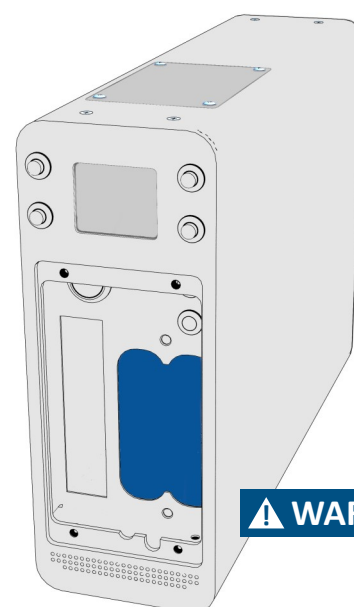


ESD Sensitive Device!

Electronic products and their components are sensitive to static electricity. Therefore, care must be taken during all handling operations and inspections of this product, in order to ensure product integrity at all times.

The warranty does not cover

- › Any product, on which the serial number has been defaced, modified or removed.
- › Damage, deterioration or malfunction resulting from:
Accident, misuse, neglect, fire, water, lightning, or other acts of nature, unauthorised product modification, or failure to follow instructions supplied with the product.
- › Repair or attempted repair by anyone not authorised by us.
- › Any damage of the product due to shipment.
- › Causes external to the product, such as electric power fluctuation or failure.
- › Use of supplies or parts not meeting our specifications.
- › Normal wear and tear.
- › Any other causes which do not relate to a product defect.
- › Removal, installation, and set-up service charges.



Lithium Battery Precautions

Replace only with same or equivalent battery type recommended by the manufacturer. Dispose of used batteries according to the manufacturer's instructions.