



Manual: 25095

Manual Index: 07

Table of Contents:

1.	<i>Reference: Page ii, Revision History, Table</i>	<i>2 - 3</i>
2.	<i>Reference: Page 1-10, Chapter 1.5.3, Figure 1-4</i>	<i>2 - 4</i>
3.	<i>Reference: Page 4-3, Chapter 4.1.2, Table 4-2</i>	<i>2 - 5</i>
4.	<i>Reference: Page 4-4, Chapter 4.1.5, Table 4-5</i>	<i>2 - 6</i>
5.	<i>Reference: Page 4-5, Chapter 4.1.6, Table 4-6</i>	<i>2 - 7</i>
6.	<i>Reference: Page 4-5, Chapter 4.1.7.1, Table 4-7</i>	<i>2 - 8</i>
7.	<i>Reference: Page 4-6, Chapter 4.1.7.2, Table 4-8</i>	<i>2 - 9</i>
8.	<i>Reference: Page 4-6, Chapter 4.1.8.1, Table 4-9</i>	<i>2 - 10</i>
9.	<i>Reference: Page 4-7, Chapter 4.1.8.2, Table 4-12</i>	<i>2 - 11</i>



This page has been intentionally left blank.





1. Reference: Page ii, Revision History, Table

The referenced information (table) is revised as follows.

The table row:

07	General update	02	Oct 2004
----	----------------	----	----------

is changed to read:

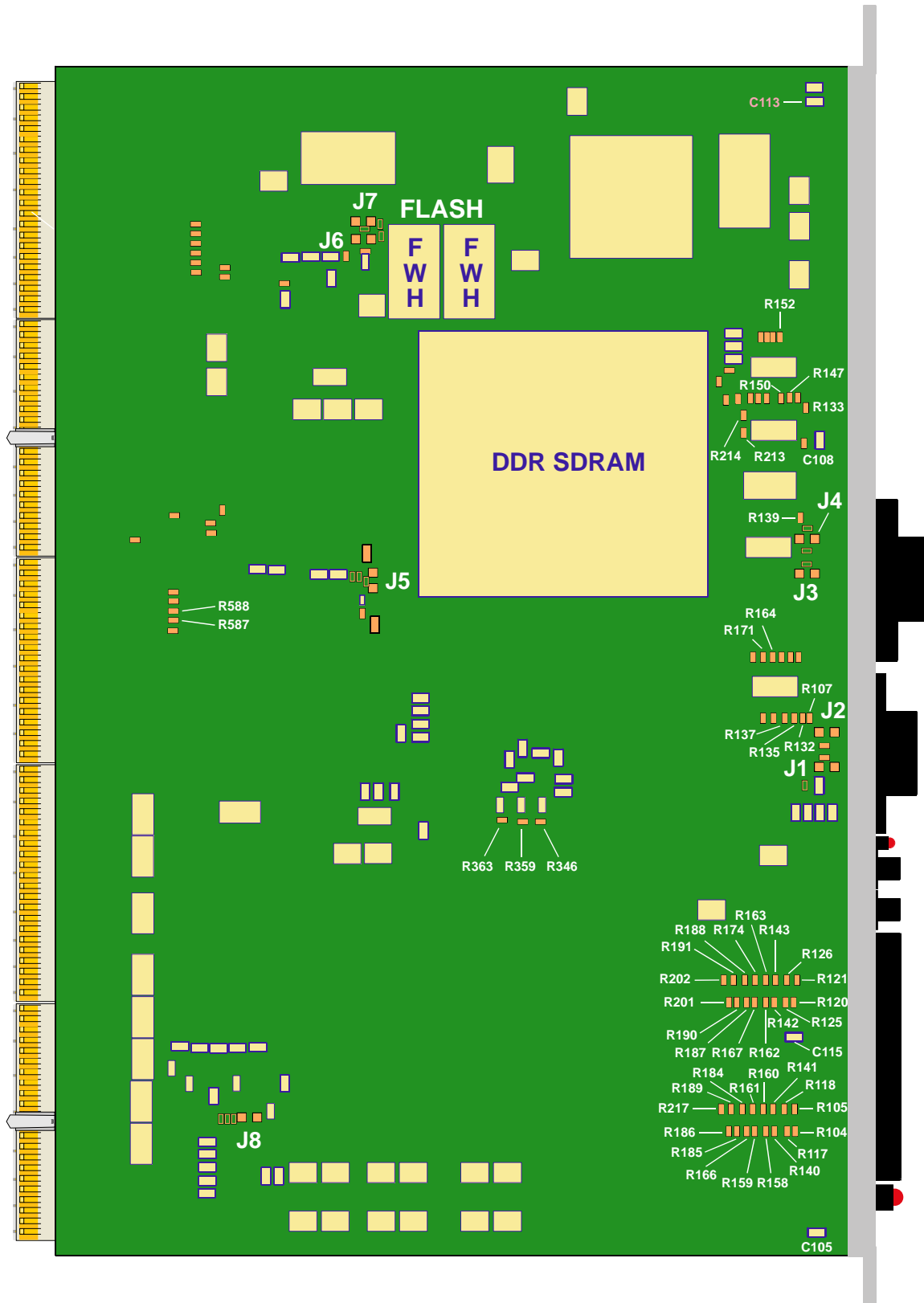
07	General update This revision is also valid for board index 03 as of November 2005.	02	Oct 2004
----	---	----	----------



2. Reference: Page 1-10, Chapter 1.5.3, Figure 1-4

The referenced information (figure) is superseded by the following replacement figure showing the board layout (reverse view) for index 03.

Figure 1-1: CP605 Board Layout (Reverse View)





3. Reference: Page 4-3, Chapter 4.1.2, Table 4-2

The referenced information (table) is revised as follows.

The table:

Table 4-2: CompactFlash Configuration

J100 or R72	DESCRIPTION
Closed	Configured for slave
<i>Open</i>	<i>Configured for master</i>

is changed to read:

Table 4-2: CompactFlash Configuration

J100 or R139	DESCRIPTION
Closed	Configured for slave
<i>Open</i>	<i>Configured for master</i>

4. Reference: Page 4-4, Chapter 4.1.5, Table 4-5

The referenced information (table) is revised as follows.

The table:

Table 4-5: Shorting Chassis GND (Shield) to Logic GND

CAPACITOR	SETTING	DESCRIPTION
C103, C104, C107, C114	<i>Closed 470pF 2KV capacitors</i>	<i>Connectors are isolated to logic GND with four 470pF 2KV capacitors</i>
	Closed zero ohm resistors	Connectors are connected to logic GND and chassis GND

is changed to read:

Table 4-5: Shorting Chassis GND (Shield) to Logic GND

CAPACITOR	SETTING	DESCRIPTION
C105, C108, C113, C115	<i>Closed 470pF 2KV capacitors</i>	<i>Connectors are isolated to logic GND with four 470pF 2KV capacitors</i>
	Closed zero ohm resistors	Connectors are connected to logic GND and chassis GND

5. Reference: Page 4-5, Chapter 4.1.6, Table 4-6

The referenced information (table) is revised as follows.

The table:

Table 4-6: VGA-CRT Jumper Setting

RESISTORS R303, R310, R324	DESCRIPTION
<i>Open</i>	<i>Only front I/O</i>
Closed	Front I/O and rear I/O

is changed to read:

Table 4-6: VGA-CRT Jumper Setting

RESISTORS R346, R359, R363	DESCRIPTION
<i>Open</i>	<i>Only front I/O</i>
Closed	Front I/O and rear I/O

6. Reference: Page 4-5, Chapter 4.1.7.1, Table 4-7

The referenced information (table) is revised as follows.

The table:

Table 4-7: PICMG 2.16 Rear I/O Configuration for Port 1

CONFIGURATION	FRONT I/O	REAR I/O
R95, R106 R123, R133 R145, R154 R164, R172	Closed	Open
R96, R107 R124, R134 R146, R155 R173, R177	Open	Closed

is changed to read:

Table 4-7: PICMG 2.16 Rear I/O Configuration for Port 1

CONFIGURATION	FRONT I/O	REAR I/O
R120, R125 R142, R162 R167, R187 R190, R201	Closed	Open
R121, R126 R143, R163 R174, R188 R191, R202	Open	Closed



7. Reference: Page 4-6, Chapter 4.1.7.2, Table 4-8

The referenced information (table) is revised as follows.

The table:

Table 4-8: PICMG 2.16 Rear I/O Configuration for Port 2

CONFIGURATION	FRONT I/O	REAR I/O
R91, R103 R121, R130 R142, R152 R163, R170	Closed	Open
R92, R105 R122, R131 R143, R153 R171, R176	Open	Closed

is changed to read:

Table 4-8: PICMG 2.16 Rear I/O Configuration for Port 2

CONFIGURATION	FRONT I/O	REAR I/O
R104, R117 R140, R158 R159, R166 R185, R186	Closed	Open
R105, R118 R141, R160 R161, R184 R189, R217	Open	Closed

8. Reference: Page 4-6, Chapter 4.1.8.1, Table 4-9

The referenced information (table) is revised as follows.

The table:

Table 4-9: Resistor Setting to Configure COM1

Resistor	RS-232	RS-422	RS-485
R137	<i>Open</i>	Closed	Closed
R126	<i>Open</i>	Open	Closed
R108	<i>Closed</i>	Closed	Open
R149	<i>Open</i>	Closed	Open

is changed to read:

Table 4-9: Resistor Setting to Configure COM1

RESISTOR	RS-232	RS-422	RS-485	RS-485 + RTS inv.
R164	<i>Open</i>	Closed	Closed	Closed
R137	<i>Open</i>	Open	Closed	Open
R132	<i>Open</i>	Open	Open	Closed
R107	<i>Open</i>	Open	Open	4k7 Resistor
R135	<i>Closed</i>	Closed	Open	Open
R171	<i>Open</i>	Closed	Open	Open



9. Reference: Page 4-7, Chapter 4.1.8.2, Table 4-12

The referenced information (table) is revised as follows.

The table:

Table 4-12: Resistor Setting to Configure COM2

Resistor	RS-232	RS-422	RS-485
R128	<i>Open</i>	Closed	Closed
R167	<i>Open</i>	Open	Closed
R168	<i>Closed</i>	Closed	Open
R115	<i>Open</i>	Closed	Open

is changed to read:

Table 4-12: Resistor Setting to Configure COM2

RESISTOR	RS-232	RS-422	RS-485	RS-485 + RTS inv.
R152	<i>Open</i>	Closed	Closed	Closed
R213	<i>Open</i>	Open	Closed	Open
R150	<i>Open</i>	Open	Open	Closed
R147	<i>Open</i>	Open	Open	4k7 Resistor
R214	<i>Closed</i>	Closed	Open	Open
R133	<i>Open</i>	Closed	Open	Open



This page has been intentionally left blank.

