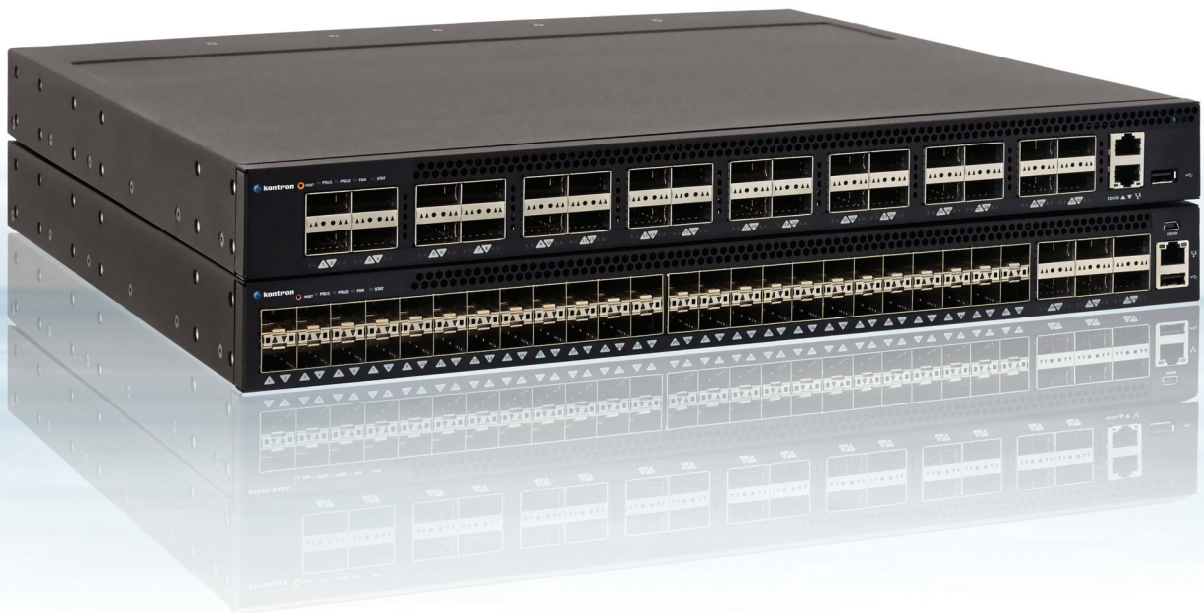


SYMKLOUD TOR SWITCHES

HIGH-DENSITY 10GE/40GE/100GE 1U SWITCHES



SYMKLOUD 

CN100-3232 & CN100-0654

NEXT GEN SPINE-LEAF DC ARCHITECTURE

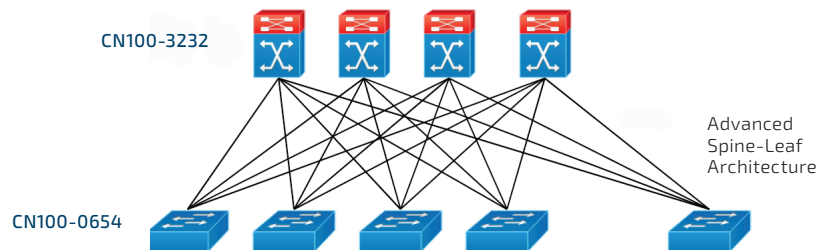
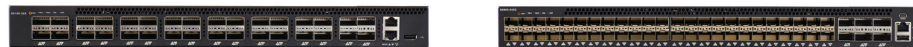
- ▶ Simplify datacenter network infrastructure
- ▶ Extensive DC features and enabled for SDN, OpenFlow traffic
- ▶ Auto installation and integration with orchestration tools
- ▶ Hardware-based VXLAN/NVGRE support for network scaling

POSSIBILITIES START HERE



TECHNICAL INFORMATION

	CN100-3232	CN100-0654
SERVICE PORTS	32x100G QSFP28 1 x 1G Out-of-Band Management 1 x RJ45 Console 1 x USB2.0 Host	48 x 25G SFP28 6 x 100G QSFP28 1 x 1G Out-of-Band Management 1 x RJ45 Console 1 x USB2.0 Host
SWITCHING CAPACITY	6.4 Tbps	3.6 Tbps
PACKET THROUGHPUT	2.98 Gpps	2.678 Gpps
SWITCHING IC	Broadcom StrataXGS® Tomahawk	
PROCESSOR	Intel® Atom™ Processor C2558, 2.4G 4-Core	
MEMORY	DDR3 8G/16G (two SODIMM with ECC)	
STORAGE	M.2 64GB SSD	
DIMENSIONS	440 x 406 x 44 (mm)	
WEIGHT	8.4kg	
MTBF	187444 (HR)	
AIRFLOW & FAN	Front-to-Back or Back-to-Front, 3+1 redundant FAN FRU	
POWER SUPPLY	1+1 redundant 550W PSU Hot-Swap FRU	
INPUT VOLTAGE	100V ~ 240V AC; 50Hz ~ 60Hz	
OPERATION TEMPERATURE	0°C ~ 45°C	
OPERATION HUMIDITY	5% ~ 95% non-condensing	
DATACENTER FEATURES	FIP Snooping Congestion Notification (CN) ETS PFC DCBX for PFC (CIN/CEE v1.06/IEEE) DCBX for ETS (CIN/CEE v1.06/IEEE) Puppet/Chef Support VXLAN/NVGRE support - Neutron plug-ins for OpenStack	
IPV6	Advanced v4/v6 dual stack	
SECURITY	Includes, among other features: Static/Dynamic Port Security (MAC-based); ACL; RADIUS; TACACS+; HTTPS & SSL; SSH 1.5/2.0; DoS Control; MAC filter; DHCP snooping; Control Plane Policy (CoPP)	
MANAGEMENT	Includes, among other features: Industrial standard CLI; LI filtering; TFTP/XMODEM/FTP/SCP/SFTP software & configuration download/upload; Dual Image; SNMP v1/v2c/v3; RMON 1,2,3,9 groups; BOOTP client/relay; DHCP	



ORDERING INFORMATION

ARTICLE	PART NO.	DESCRIPTION
CN100-3232	1060-7861	32 x 100G QSFP28 ports, ICOS/FASTPATH network OS; no SFP or QSFP
CN100-0654	1060-7860	48 x 25G SFP28 and 6 x 100G QSFP28 ports, ICOS/FASTPATH network OS; no SFP or QSFP
CN100-3232-BM	1060-7942	32 x 100G QSFP28 ports, w/o network OS; no SFP or QSFP; ONIE compliant
CN100-0654-BM	1060-7941	48 x 25G SFP28 / 6 x 100G QSFP28 ports, w/o network OS; no SFP or QSFP; ONIE compliant

CORPORATE OFFICES

EUROPE, MIDDLE EAST & AFRICA

Lise-Meitner-Str. 3-5
86156 Augsburg
Germany
Tel.: +49 821 4086-0
Fax: +49 821 4086-111
info@kontron.com

NORTH AMERICA

14118 Stowe Drive
Poway, CA 92064-7147
USA
Tel.: +1 888 294 4558
Fax: +1 858 677 0898
info@us.kontron.com

ASIA PACIFIC

1-2F, 10 Building, No. 8 Liangshuihe 2nd Street,
Economical & Technological Development Zone,
Beijing, 100176, P.R. China
Tel.: +86 10 63751188
Fax: +86 10 83682438
info@kontron.cn