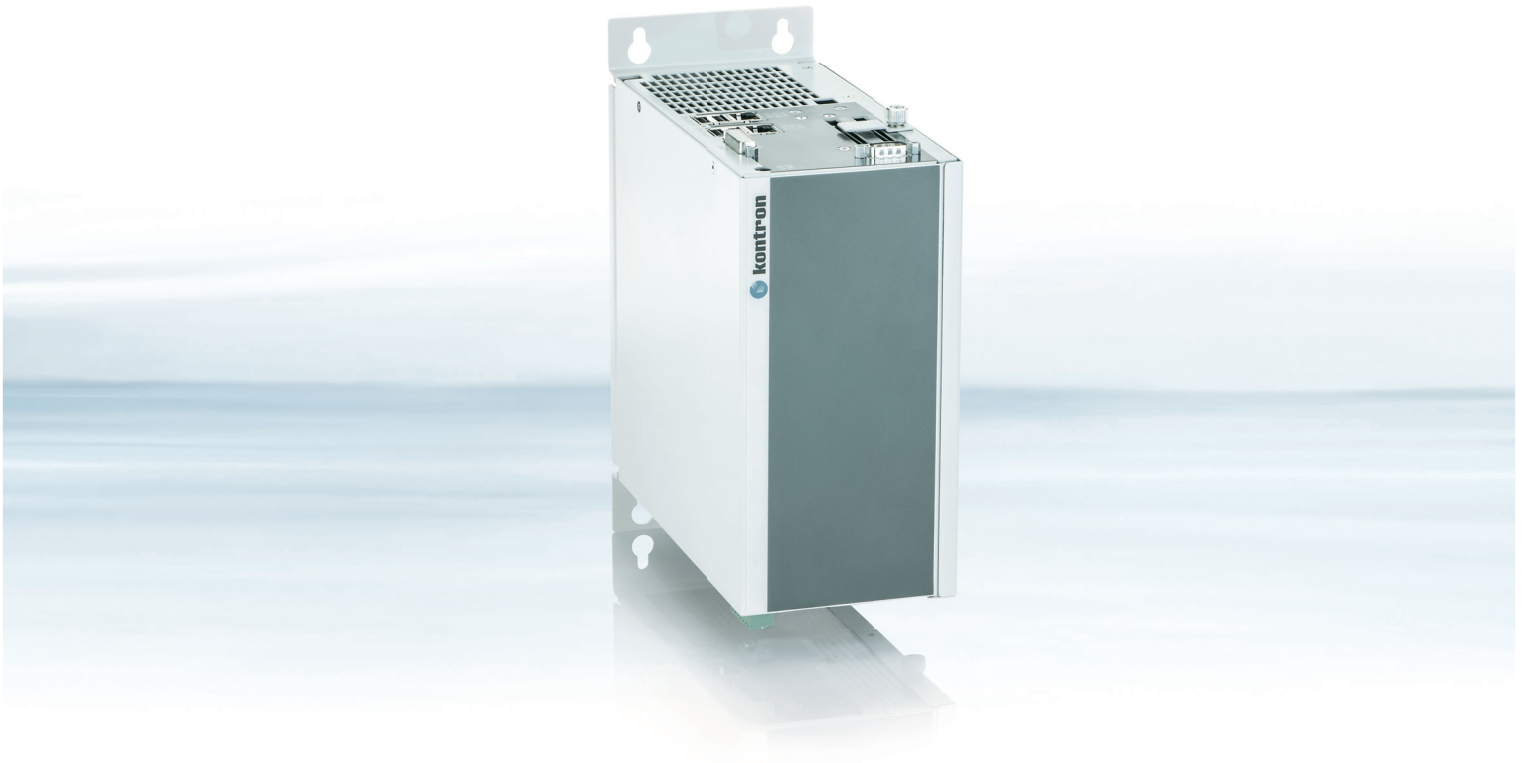


KBox C-100



KBox C-100

- ▶ compact industrial PC based on Kontron COMe modules
- ▶ wide performance span from Celeron® class CPU's to Quad Core™ class CPU's
- ▶ modular approach- Forever Young
- ▶ Interfaces on top and bottom side
- ▶ ready for RTS hypervisor

KBOX C-100

KONTRON INTELLIGENT CONTROL

The system has two interface sides: An upper and a lower side. Due to this a lot of interface could be placed onto the system with the advantage of having a very compact BOX-IPC.

The system consist of a CPU module COMe-XX and and carrier board. The CPU modules can have CPU chips from Celeron® class

to Core™ i7 Quad core class. Therefore an adaptation of performance is possible over a wide range to get an excellent price performance ratio.

In the moment Core™ processors of the 2 and 3 generation are approved.

► TECHNICAL INFORMATION

PROCESSOR	CPU CHIPSET MAX.SPEED BIOS	Celeron® 1047UE, Core™ i3-3217UE, Core™ i7-3612QE HM76, QM77 3.10 GHz AMI Aptio UEFI
MEMORY	TECHNOLOGY MAX. CAPACITY	DDR3-1600 SO-DIMM up to 16 GByte
INTERFACES	SERIAL PORTS USB GRAPHIC PORTS ETHERNET	1x COM 4x USB 2.0 upper side, 3x USB 2.0 bottom side 1x DVI-I 2x GbE upper side, 2x GbE bottom side
COOLING	FAN	with fan
OTHERS	CONTROL AUDIO	7 pin Phoenix connector with several control signals 1x Line out
EXPANSION	PCIe	1x PCIe x1 low-profile slot
STORAGE	SATA CFAST	Up to 2x 2.5" HDD/SSD Up to 2x CFAST
SOFTWARE SUPPORT	MICROSOFT WINDOWS LINUX HYPERVISOR CODESYS MOTION	Windows® 7, Windows® XP, WES200 works on request tested by partner Real-Time-Systems tested by partner 3S
POWER	INPUT VOLTAGE	24 V DC
MECHANICAL	CONSTRUCTION MOUNTING DIMENSIONS (W X H X D) WEIGHT	aluminium housing control cabinet key holes, book size format 200 x 200 x 100 mm 3 kg (6.613 lbs)
ENVIRONMENT	OPERATING TEMPERATURE STORAGE TEMPERATURE RELATIVE HUMIDITY OPERATING VIBRATION OPERATING SHOCK MTBF EMC SAFETY CERTIFICATIONS	0° C to 50° C (32° F to 122° F) -25 ... +70 °C (-13 ... 158 °F) 20 % to 80 % (non-condensing) acc. IEC 60068-2-6, 10 – 500 Hz, 1G acc. IEC 60068-2-27 15G, 11ms. 6 directions 70 000 h CE, FCC (US/CAN) UL

► CORPORATE OFFICES

EUROPE, MIDDLE EAST & AFRICA

Lise-Meitner-Str. 3-5
86156 Augsburg
Germany
Tel.: + 49 821 4086 0
Fax: + 49 821 4086 111
info@kontron.com

NORTH AMERICA

14118 Stowe Drive
Poway, CA 92064-7147
USA
Tel.: + 1 888 294 4558
Fax: + 1 858 677 0898
info@us.kontron.com

ASIA PACIFIC

1-2F, 10 Building, No. 8 Liangshuihe 2nd Street,
Economical & Technological Development Zone,
Beijing, 100176, P.R.China
Tel.: +86 10 63751188
Fax: +86 10 83682438
info@kontron.cn