

# COBALT-S1901 PLATFORM

---



Forced Air Cooled



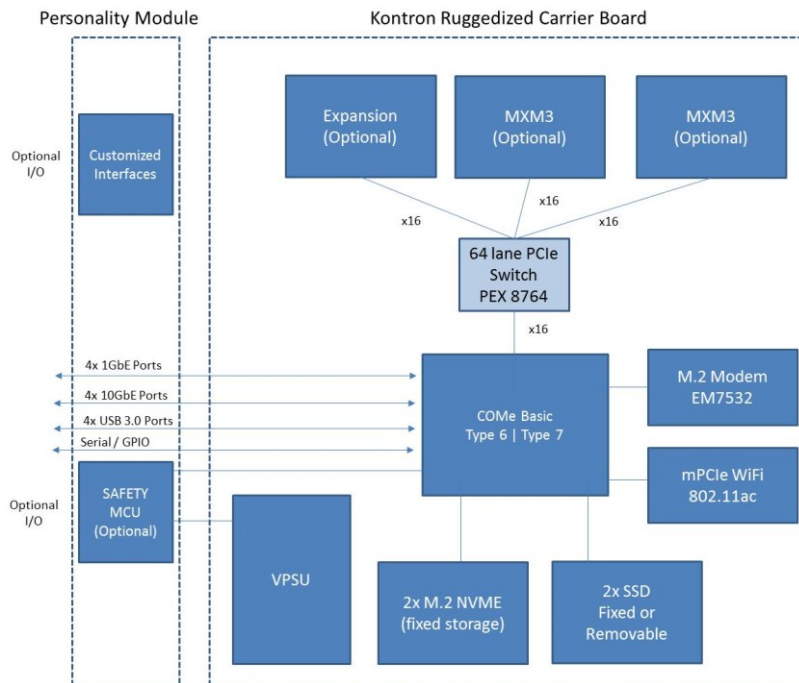
Conduction Cooled

## Application Ready Platform for Defense Systems

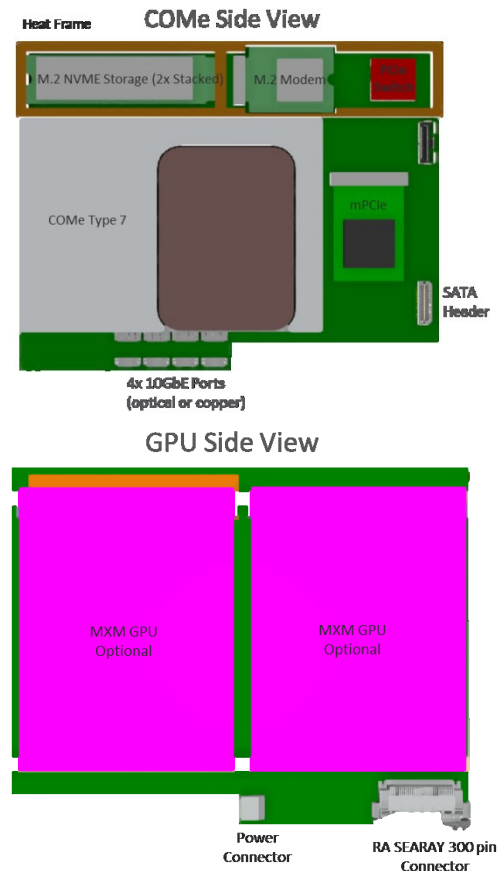
- ▶ ComExpress Intel® High Performance Processor
- ▶ expansion slots for multiple GPU, FPGA accelerators, or video modules
- ▶ multiple I/O high speed interfaces and high capacity storage options
- ▶ wireless connectivity options for cellular and wifi
- ▶ ruggedized & modular platform for defense deployments

## TECHNICAL INFORMATION

DIMENSIONS	13.0"W x 7.0"D x 3.25"H
COMe PROCESSOR	COMe-bDV7 (Denverton) COMe-bKL6 (Kabylake)   COMe-bSL6 (Skylake)   COMe-bBL6 (Broadwell) Up to 64GB RAM (processor dependent)
MXM3 GPU	MXM GT1080 (150W), MXM P5000 (100W), other MXM modules possible
STORAGE	2x M.2 NVME   2x 2.5" SSD (fixed or removable)
ETHERNET PORTS	4x 1GbE   4x 10GbE (Copper or Optical)   Ethernet Switch (optional)
PCI-EXPRESS	(3) x1 PCIe internal   (1) x16 PCIe connector header (optional)
USB	4x USB 3.0/2.0 ports
WIRELESS	Cellular (M.2) connectivity   WiFi (mPCIe) connectivity
SERIAL	2x RS232
DISCRETES	8x direct GPIO   40x GPIO (optional)
POWER	+28 VDC (+18 VDC to +36 VDC) power input Power Consumption: up to 350W (configuration dependent)
COOLING	Conduction Cooled or Air Cooled Assist (configuration dependent)
ENVIRONMENT	5 Hz to 2000 Hz, Random, 1hr each axis, 8.21 GRMS Power Spectrum Density 40 g, 11ms sawtooth MIL-STD-461E, MIL-STD-1275D, MIL-STD-704, RTCA/DO-160F, Section 20-21 -40 °C to +71 °C
OPERATING SYSTEM	Linux Ubuntu 16.04, LTS, 64-Bit (installed)



## System Architecture | Configurable Options For Project Based Solutions



## CORPORATE OFFICES

### EUROPE, MIDDLE EAST & AFRICA

Lise-Meitner-Str. 3-5  
86156 Augsburg  
Germany  
Tel.: +49 821 4086 0  
Fax: +49 821 4086 111  
info@kontron.com

### NORTH AMERICA

9477 Waples Street  
San Diego, CA 92121  
USA  
Tel.: +1 888 294 4558  
Fax: +1 858 677 0898  
info@us.kontron.com

### ASIA PACIFIC

1-2F, 10 Building, No. 8 Liangshuihe 2nd Street,  
Economic & Technological Development Zone,  
Beijing, 100176, P.R.China  
Tel.: +86 10 63751188  
Fax: +86 10 83682438  
info@kontron.cn