

This application note describes how to implement Remote Access via COM Port.

The following products have the Remote Access function integrated in BIOS:

786LCD/mITX
 886LCD-M/mITX
 886LCD-M/Flex
 886LCD-M/ATX

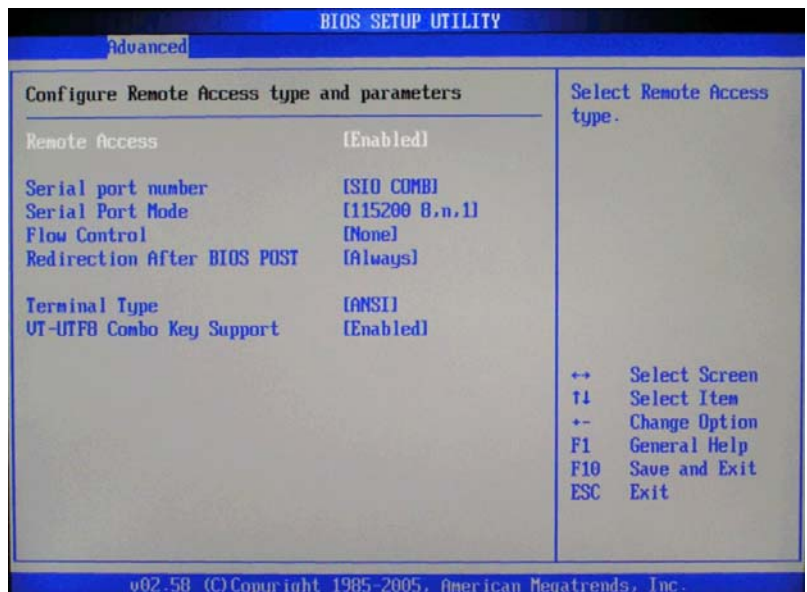
Remote Access function

The Remote Access is used to redirect the Keyboard input and Monitor output to a COM port. This way it is possible from a remote computer via the serial line to enter the BIOS and make changes and it is possible to control DOS from a remote computer, but there is no guarantee that all applications works correctly. Please note that the key to enter BIOS can only be used when the VT100 terminal emulation is selected otherwise the <F4> shall be used to enter BIOS. The remote computer can be configured with Windows and Hyper Terminal etc.

How to setup Remote Access

Before the remote computer can take over the control both computer must have the same COM port setup.

Enter the BIOS and select the **Advanced> Remote Access Configuration> Remote Access = [Enabled]**



Continue selecting:

- Serial Port Number** [COM1/COM2] (786LCD-M/mITX)
[SIO COMA/ SIO COMB] (886LCD-M family)
- Serial Port Mode** [115200 8,n,1/ 57600 8,n,1/ 38400 8,n,1/ 19200 8,n,1/ 9600 8,n,1]
- Flow Control** [None/ Hardware/ Software]
- Redirection after BIOS POST** [Disabled/ Boot Loader/ Always]
Disable turns off the Redirection after POST.
Boot Loader Redirection is active during POST and during Boot Loader
Always Redirection is always active
- Terminal Type** [ANSI/ VT100/ VT-UTF8]
- VT-UTF8 Combo Key Support** [Disabled/ Enabled]
 (Used to enable the VT-UTF8 Combination Key for ANSI/VT100 Terminals).