



SYMKLOUD-MS

OneClick Bundle 3.19.00

Release Notes

PCN no.: 2203

Revision	Brief Description of Changes	Date of Issue
0.1	Initial release	30-Mars-2022

1/ Description of the change(s)

The new OneClick bundle Royal Elfin (version 3.19.00) is now available for the SYMKLOUD-MS platform, which includes all new firmwares for the listed Symkloud series systems.

1.1. OneClick bundle 3.19.00

The versions of each firmware component included in the bundle are listed in the table below, with those that have been updated (vs. the versions included in the previous bundle) highlighted in **bold**. The changes introduced in each individual firmware component are listed in section "4/ Individual Changelog" of this document.

	Product	Component	Previous version	New version
	OneClick Bundle MS29XX		3.18.00(Quartz Elfin)	3.19.00(Royal Elfin)
Hub Nodes	MSH8900	ShMC	3.24.09564C66	3.25.096293E7
		FPGA	2.06	same
	MSH8910	ShMC	3.26.09564C66	2.27.096293E7
		FPGA	1.12	same
	MSH8920	ShMC	1.23.01564bf2	1.25.01628cc4
		FPGA	1.05.0800D656	same
Compute Nodes	MSP800x	BIOS	1.00	same
		IPMC	3.33.0916B3EC	same
		FPGA	1.10	same
	MSP802x	BIOS	2.21.093A2A53	same
		IPMC	2.20.091805DF	same
		FPGA	2.14	same
	MSP803x	BIOS	2.16	same
		IPMC	1.01.090A145F	same
		FPGA	1.00	same
	MSP804x	BIOS	1.61.09537B54	1.62.0961549D
		IPMC	2.03.09564C9A	2.04.096293E4
		FPGA	2.06	same
	MSP805x	BIOS	1.07.093A4DC4	same
		IPMC	1.12.09564C66	1.13.096293E7
		FPGA	1.02	same
	MSP806x	BIOS	1.14.094AF3E9	same
		IPMC	1.16.01564bf1	1.17.01628d2f
		FPGA	1.01.0800f920	same

2/ Change Classification

Classification	○ Maintenance release, Product improvement
Application	○ The Firmware is field upgradeable

3/ Impact on customer application and recommended actions

In order to benefit from the latest features, enhancements and fixes, Kontron recommends that customers upgrade all SYMKLOUD-MS systems and components to the latest firmware versions as soon as is practical.

4/ Individual Changelogs

Product	Component & Version	Changelog
MSH8900	ShMC 3.25.096293E7	Change since 3.24.09564C66 Bug fixes: <ul style="list-style-type: none"> Fixed an issue where the API token was not expiring Internal improvements: <ul style="list-style-type: none"> SMcore binary updated Updated Dropbear version Updated NGINX version Node sensor improvement

Product	Component & Version	Changelog
MSH8910	ShMC 2.27.096293E7	Change since 2.26.09564C66 Bug fixes: <ul style="list-style-type: none"> Fixed an issue where the API token was not expiring Internal improvements: <ul style="list-style-type: none"> SMcore binary updated Updated Dropbear version Updated NGINX version Node sensor improvement

Product	Component & version	Changelog
MSH8920	ShMC 1.25.01628cc4	Change since 1.23.01564bf2 Bug fixes: <ul style="list-style-type: none"> Fixed an issue where the API token was not expiring Internal improvements: <ul style="list-style-type: none"> SMcore binary updated Updated Dropbear version Updated NGINX version Node sensor improvement

Product	Component & Version	Changelog
MSP8040 MSP8070	BMC 2.04.096293E4	Changes since 2.03.09564C9A Internal improvements: <ul style="list-style-type: none"> Updated Dropbear version
	BIOS 1.62.0961549D	Changes since 1.61.09537B54 <ul style="list-style-type: none"> Increased BIOS version Added support for TCG OPAL HD security Merged to latest AMI code Microcode update

Product	Component & Version	Changelog
MSP8050	BMC 1.13.096293E7	Changes since 1.11.09510C90 Internal improvements <ul style="list-style-type: none"> Updated Dropbear version

Product	Component & Version	Changelog
MSP8060	BMC 1.17.01628d2f	Changes since 1.16.01564bf1 Internal improvements <ul style="list-style-type: none"> Updated Dropbear version

5/ Associated Network OS

5.1. : Release History

Firmware Package Version	Release Date	Chassis Support	MSH8900	MSH8910	MSH8920
3.19.00	Mar-2022	MS29xx, MS1300	2.28	HOTFIX4.51	1.7.2-12
3.18.00	Sept-2021	MS29xx, MS1300	2.26	HOTFIX4.51	1.7.2-12
3.17.00	Mar-2021	MS29xx, MS1300	2.25	HOTFIX4.51	1.7.2-12
3.16.00	Nov-2020	MS29xx, MS1300	2.25	HOTFIX4.51	1.7.2-12
3.15.00	Aug-2020	MS29xx, MS1300	2.25	HOTFIX4.51	1.7.2-12
3.14.00	Apr-2020	MS29xx, MS1300	2.24	HOTFIX4.51	1.7.2-12
3.13.00	Dec-2019	MS29xx, MS1300	2.23	HOTFIX4.51	1.7.2-12
3.12.00	Sept-2019	MS29xx, MS1300	2.23	HOTFIX4.51	1.7.2-12
3.11.00	Feb-2019	MS29xx, MS1300	2.22	GA4.50	1.7.2-12
3.10.00	Feb-2019	MS29xx, MS1300	2.22	GA4.50	1.7.2-12
3.09.01	Jan-2019	MS29xx	1.14	GA4.50	1.6.4-24
3.08.00	Oct-2018	MS29xx	1.14	GA4.50	1.6.4-24
3.07.00	Apr-2018	MS29xx	1.14	GA4.50	1.6.4-24
3.06.02	Feb-2018	MS29xx	1.14	GA4.50	1.6.4-24
3.05.01	Dec-2017	MS29xx	1.12	HOTFIX4.00	1.5.4-32
3.04.05	Apr-2017	MS29xx	1.12	HOTFIX4.00	N/A
3.00	May-2016	MS29xx	1.12	HOTFIX3.02	N/A
2.16	Sept-2015	MS29xx	1.12	GA2.01	N/A

6/ How to identify your product

MSH-Hub Nodes and MSP-Nodes

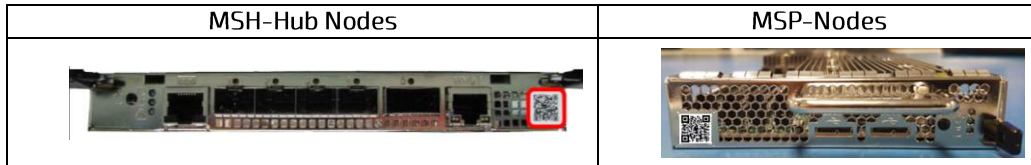
Electronically:

- From the System Monitor WebUI/API (including SystemInformation.txt)
- From any specific component's ipmitool interface (IoL, Serial, etc.) with the command 'hpm check'

Physical labels:

- Each MSH-Hub Nodes and MSP-Nodes includes a 2D barcode on its faceplate, encoding the following details:

Board serial number 90xxxxxxxx
 Board part number xxxx-xxxx
 Batch ID xxyyzzzzzz
 Base MAC address 00:A0:A5:xx:xx:xx



MS29xx Chassis

Electronically:

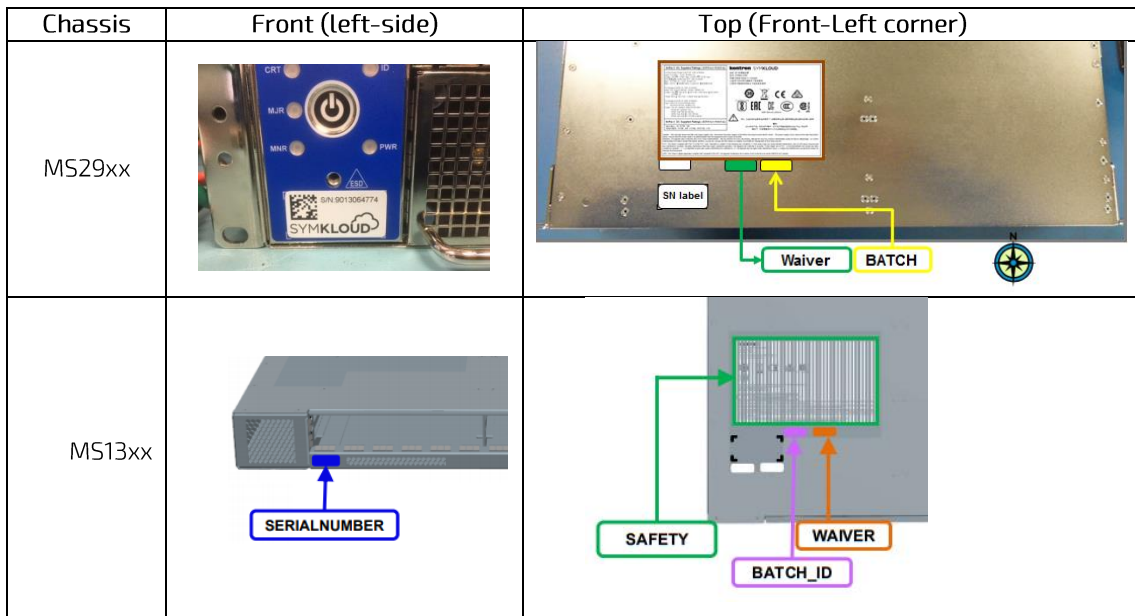
- From the Active ShMC's ipmitool interface (IoL, serial, etc.) with the command 'fru print'; the Chassis SN/PN is listed under FRU Device Description : "PDB 1 (ID 128)" and "PDB 2 (ID 130)"

Physical labels:

- Located on the top-cover of the system, the serial number and Batch ID labels encode:

Board serial number 90xxxxxxxx
 Board part number xxxx-xxxx
 Batch ID xxyyzzzzzz

The System serial number is also encoded on the front-faceplate 'Symkloud' Label (shown below).



About Kontron in Communications

Kontron designs hardware for the software-defined world. Service providers and enterprise clients around the globe collaborate with Kontron and its ISV and channel partners to deploy new services with greater speed, confidence and operational efficiency. Our portfolio is a best-of-breed of OEM hardware and SYMKLOUD Open Infrastructure Platforms dedicated to the deployment of virtual services using software defined networks (SDN) and network functions virtualization (NFV). For more information, please visit www.symkloud.com or www.kontron.com/communications.

CORPORATE OFFICES

KONTRON CANADA

4555 Ambroise-Lafortune
Boisbriand, QC
Canada J7H 0A4
Tel.: +1 450 437-5682
Tel.: +1 800 387-4223